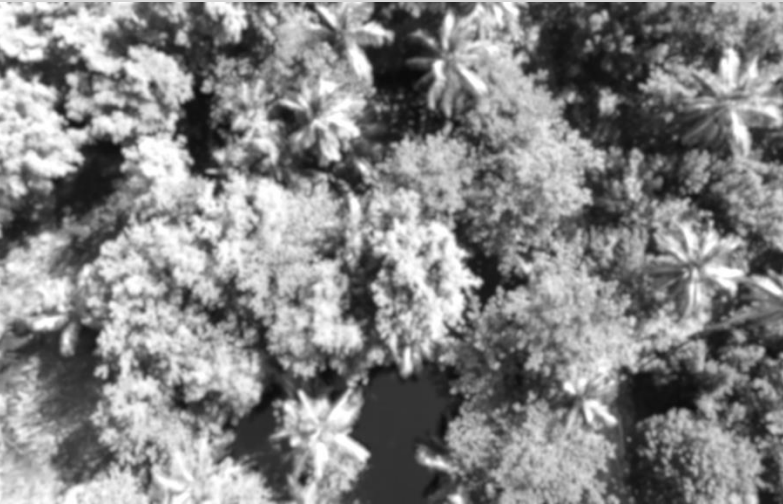


1
2
3

Portillo *casas*

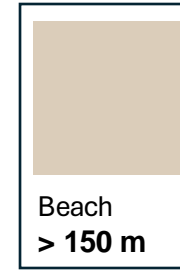


Project of 3 villas by the sea

In the heart of the residence El Portillo, each villa has 205 m² with 3 bedrooms and swimming pool

Comfort, security and tranquility

A chic and contemporary project proposed by



This document has no contractual value



info@crea-onstage.com

+1 (829) 867 06 34

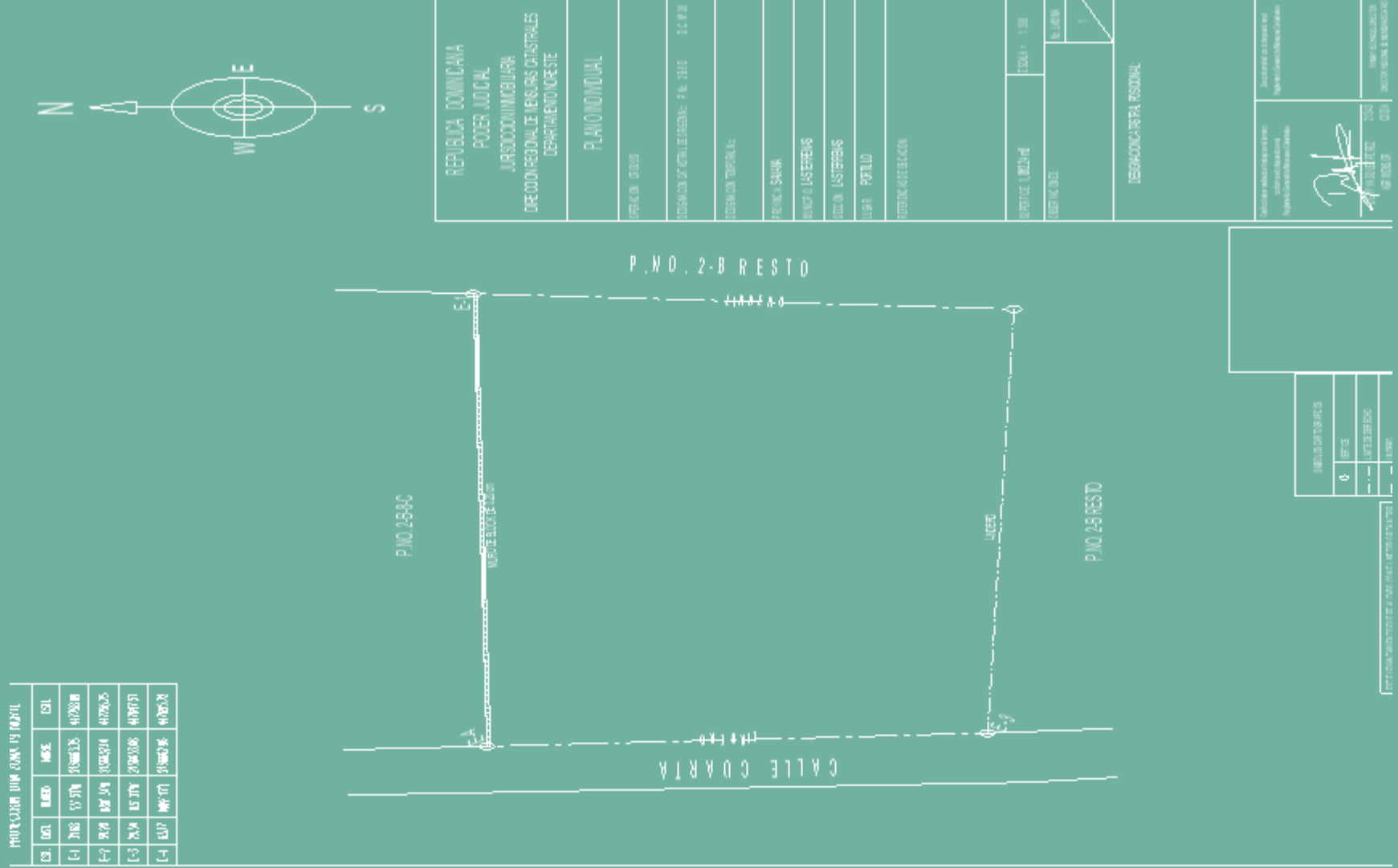
© ON STAGE & CREA - may 2024

Land

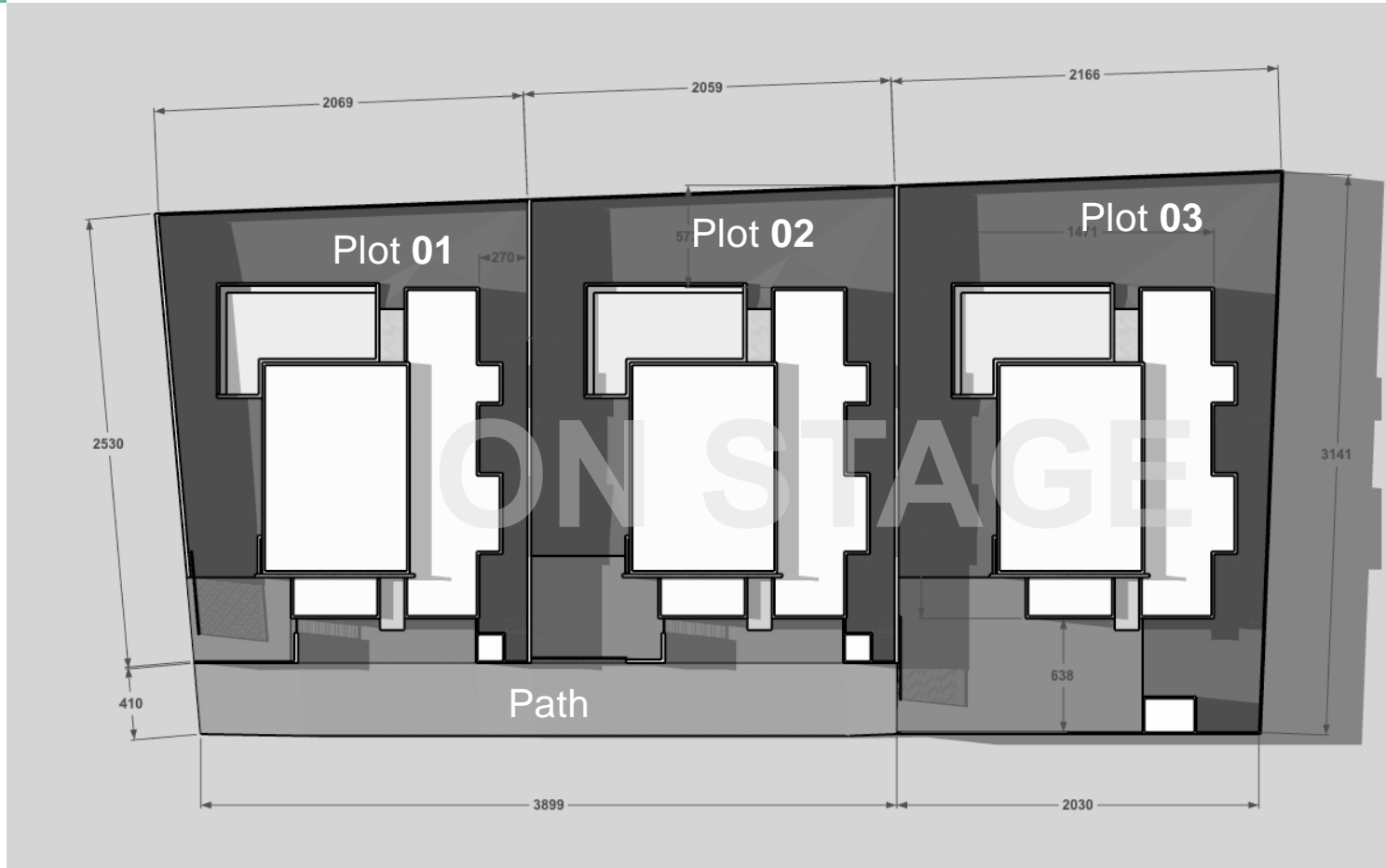
Length. 59.20 m > 63.17 m
Width 29.40 m > 31.68 m

With a total surface area of 1,862.24 m², the land is divided into 3 plots distributed by a private road.

A total backfilling must be planned to a height of +20 to +40 cm.



This document has no contractual value



Plots

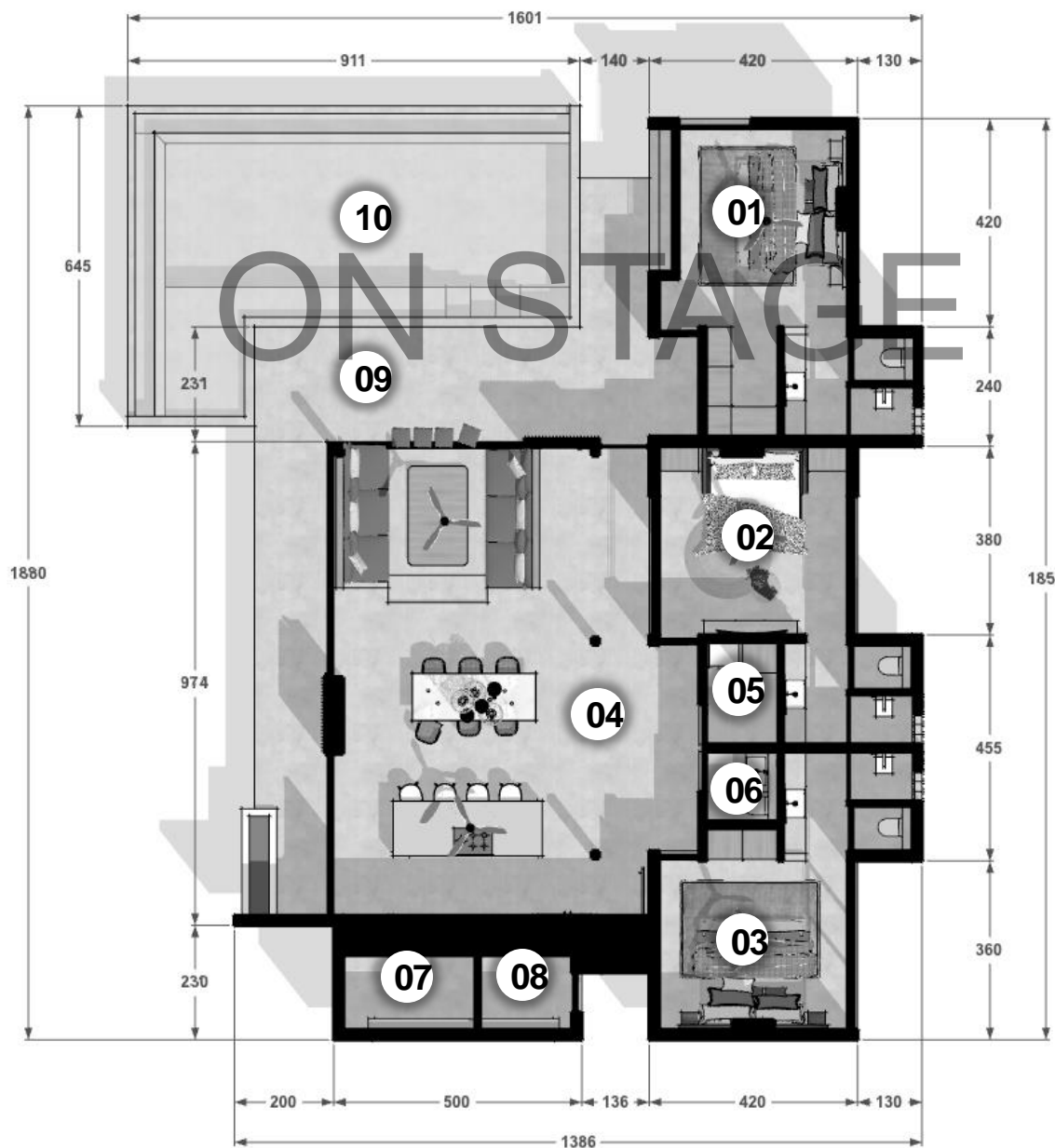
Plot N° 01	509 m2
Plot N° 02	543 m2
Plot N° 03	655 m2
Path	155 m2

Each plot is closed by a wall of H 200 cm.

The north side wall is existing

Plan

01 Bedroom	24.0 m ²
02 Bedroom <i>TV Room</i>	19.7 m ²
03 Bedroom	19.2 m ²
04 Living areas / kitchen	67.2 m ²
05 Laundry	3.3 m ²
06 WC visits	2.0 m ²
07 Office	3.8 m ²
08 Storage / technical	2.8 m ²
09 Terrace	40.5 m ²
10 Swimming pool	45 m ²



Surfaces

The useful surface (excluding walls) is 186.5 m²

The net built area is 205 m²

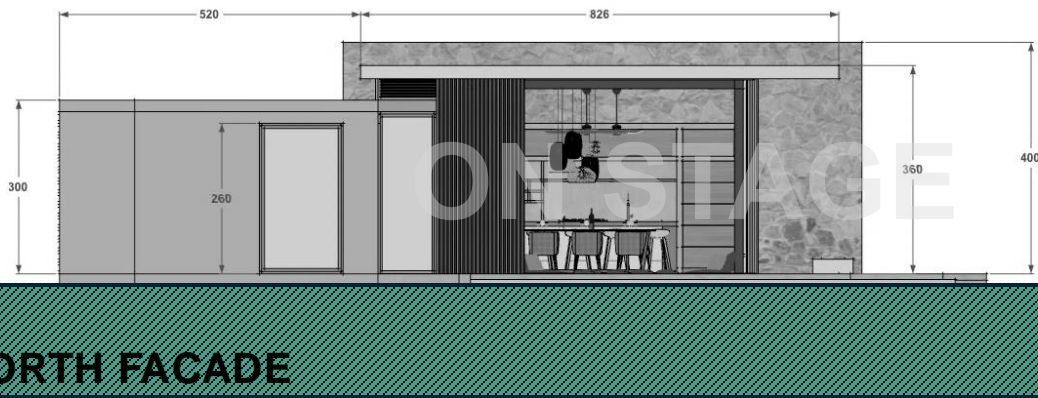
The swimming pool is 45 m²

The total built-up is 250 m²

Protection

The orientation of the villas offers optimal sun protection

The large eaves shelter the room from the sun's rays and tropical rains

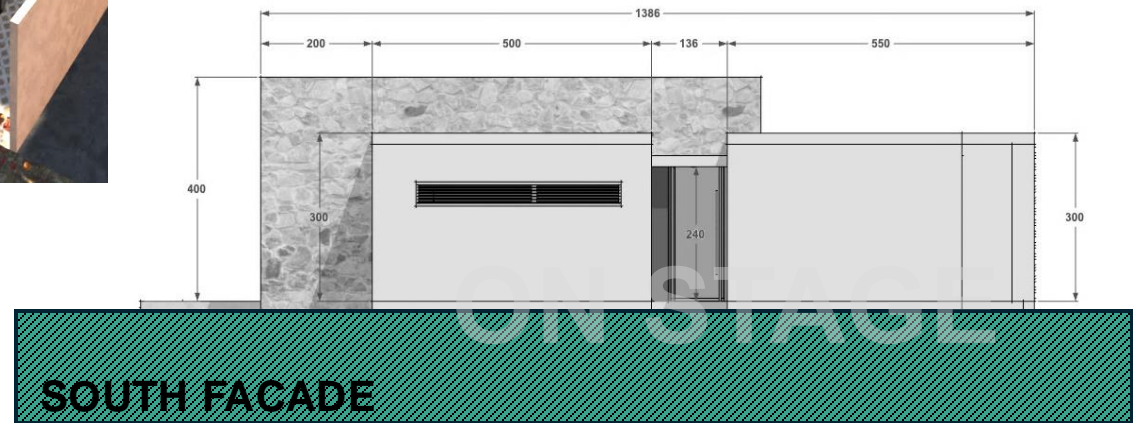


NORTH FACADE

Privacy and comfort

Large entrance spaces allow for parking of vehicles

The facade on the road side offers visual privacy and acoustic protection





WEST FACADE

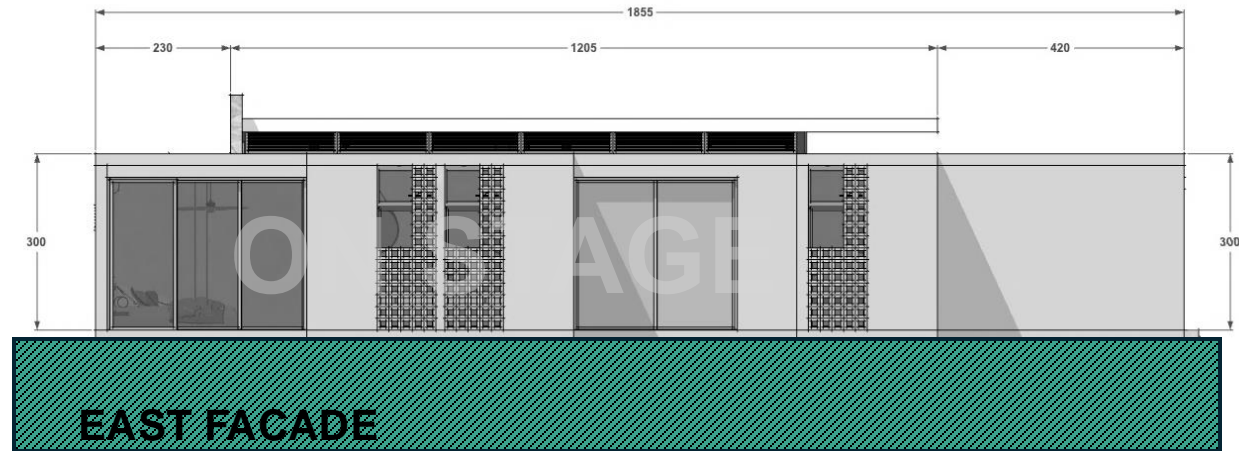
Tropical garden

The living areas and the swimming pool share a beautiful tropical garden



Privacy

Lush vegetation is present in front of each bedroom and each bathroom, providing freshness and privacy



Views

This document has no contractual value



Interaction

From the kitchen to the swimming pool, from the dining room to the living room, each space communicates with the other

Views

This document has no contractual value



Proximity

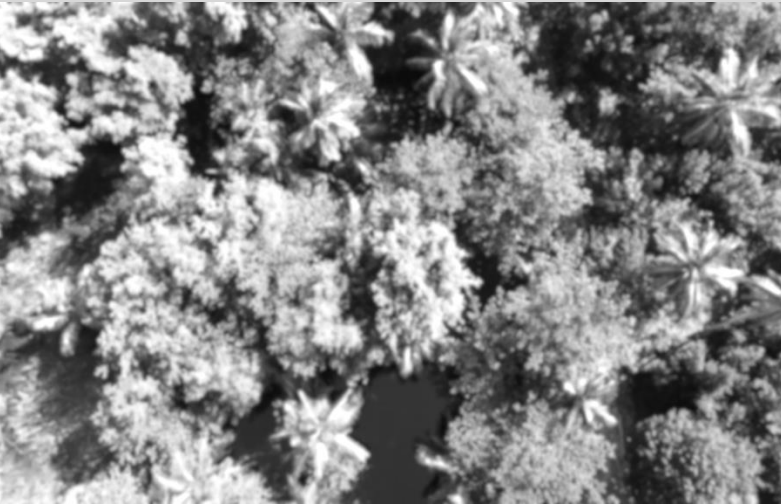
Adjoining the living room, the central bedroom transforms into a TV room

1
2
3

Portillo
casas

ON STAG

Project of 3 villas by the sea



The concept and ideas proposed are property of

ON STAGE

In no case may all or part of this project be taken up or interpreted by a third

This document has no contractual value

